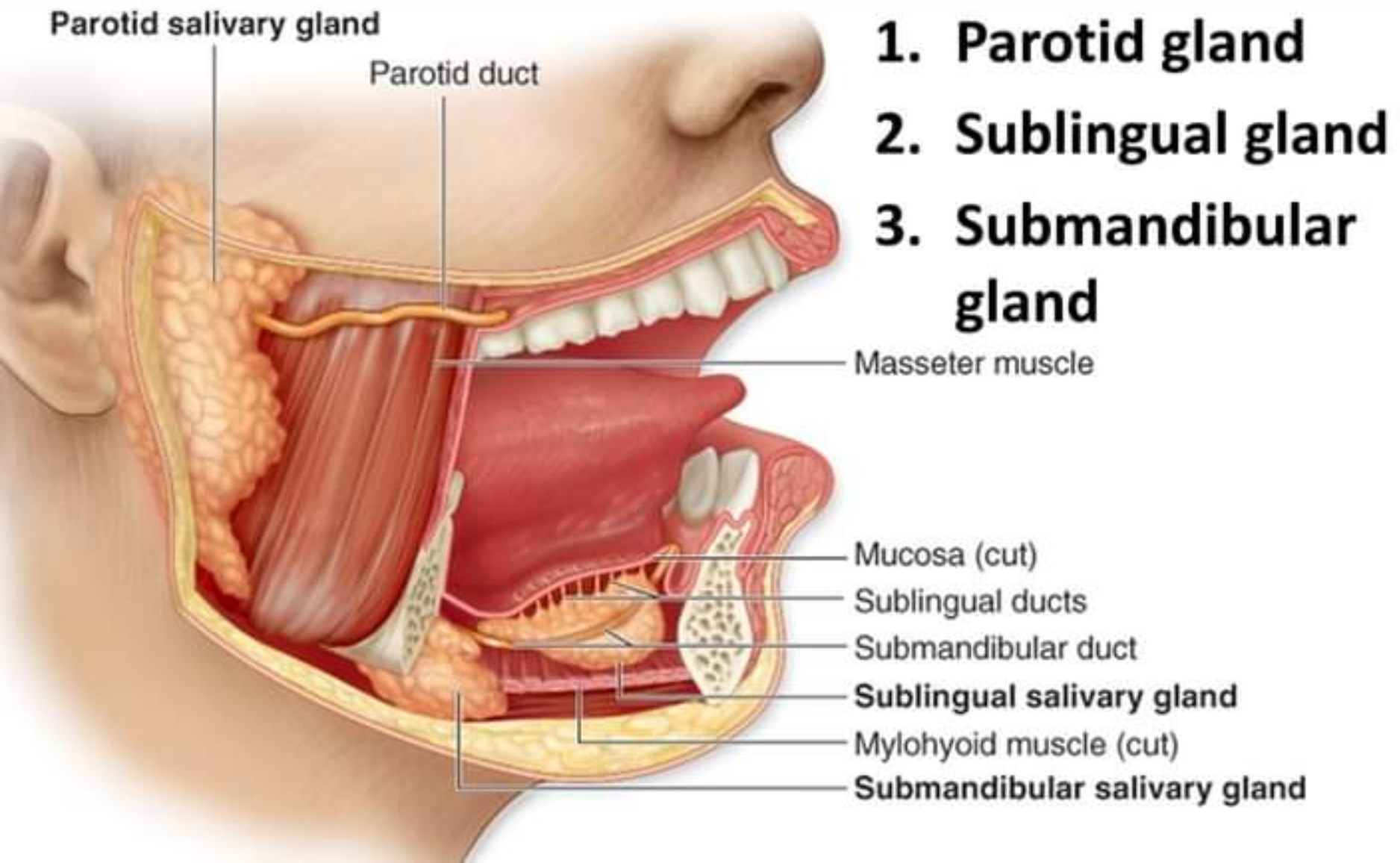
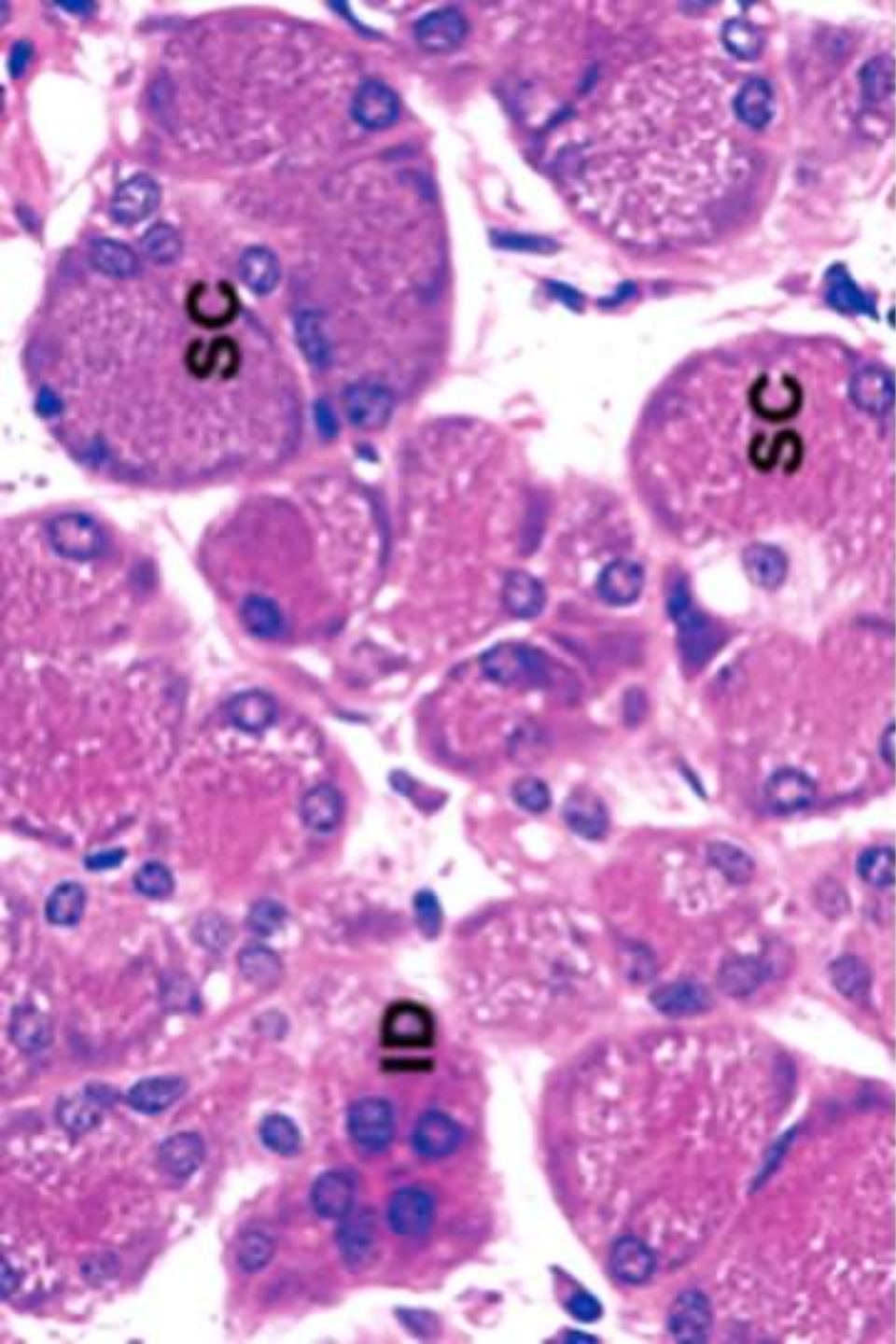


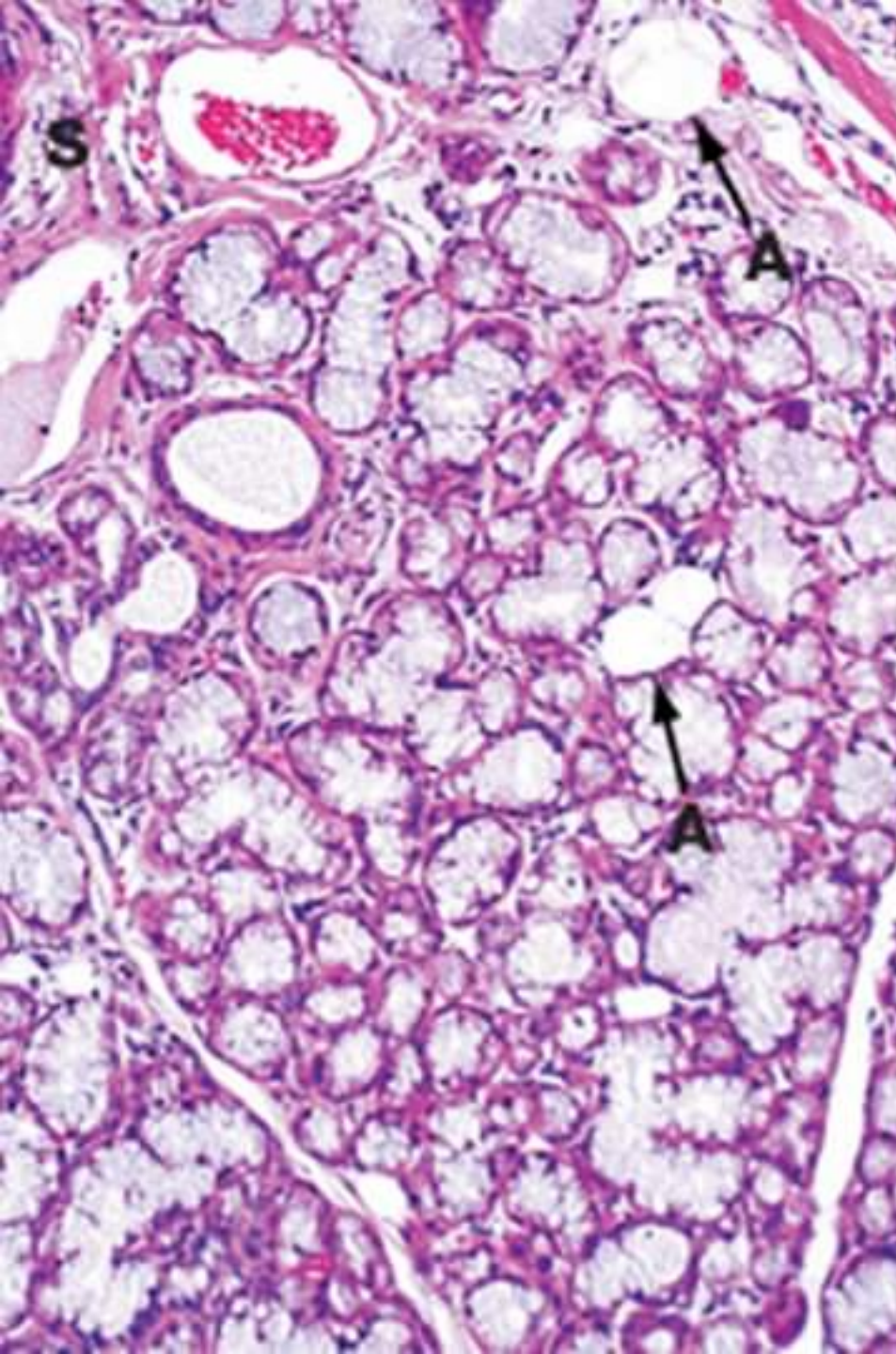
# Salivary Glands





# 1. Parotid gland

- **Serous gland**
- Note,
  - Darkly staining serous acini
  - Intercalated ducts with simple cuboidal epithelium

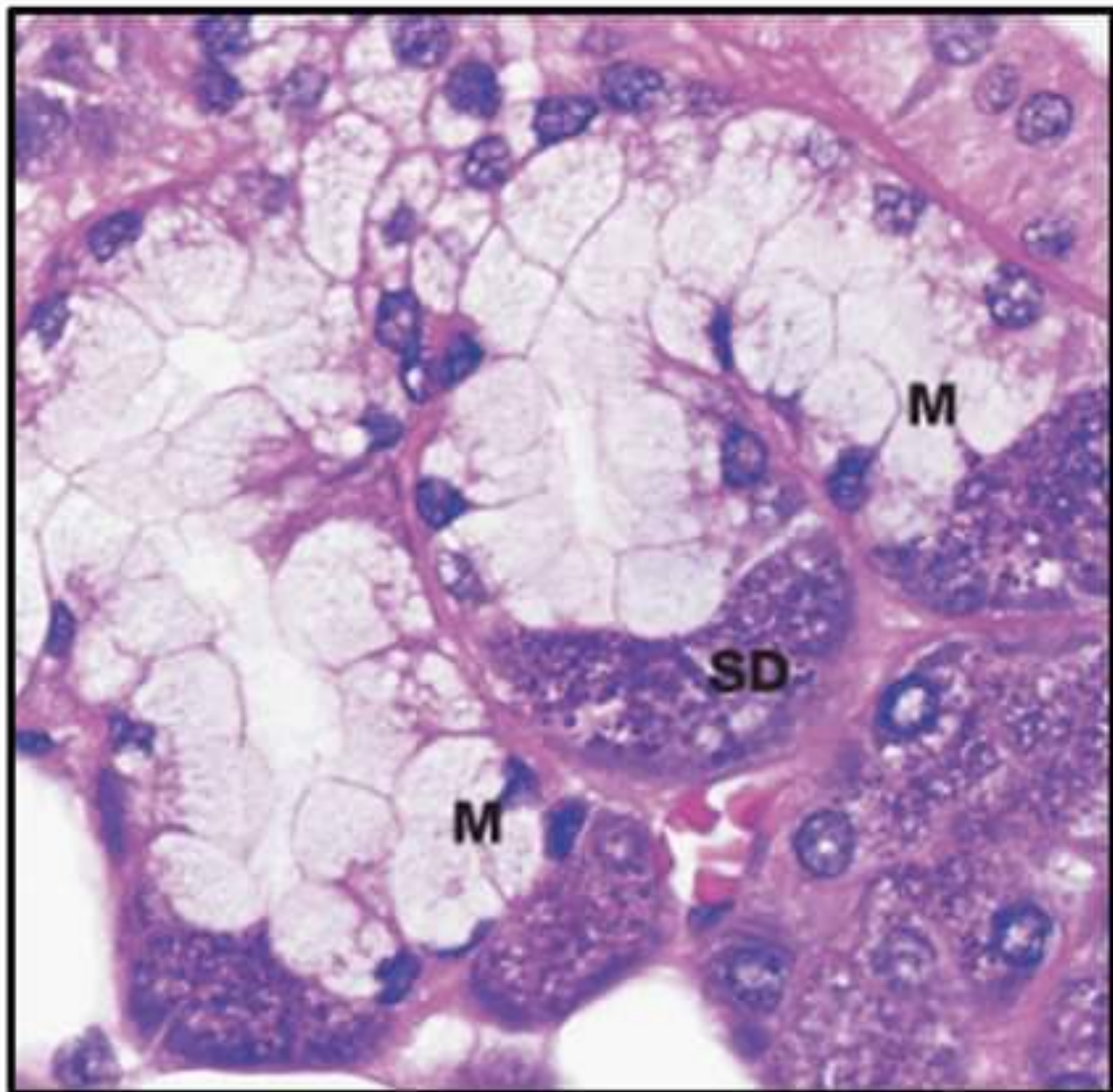


## 2. Sublingual gland

- Predominantly **mucous gland**
- Note,
  - Mucous acini staining poorly with H&E stain

# Submandibular gland

- **Mixed gland**
- Note,
  - Serous acini
  - Mucous acini
  - Mixed secretory acini with serous demilunes



# Light microscopic appearance of the components of submandibular gland

