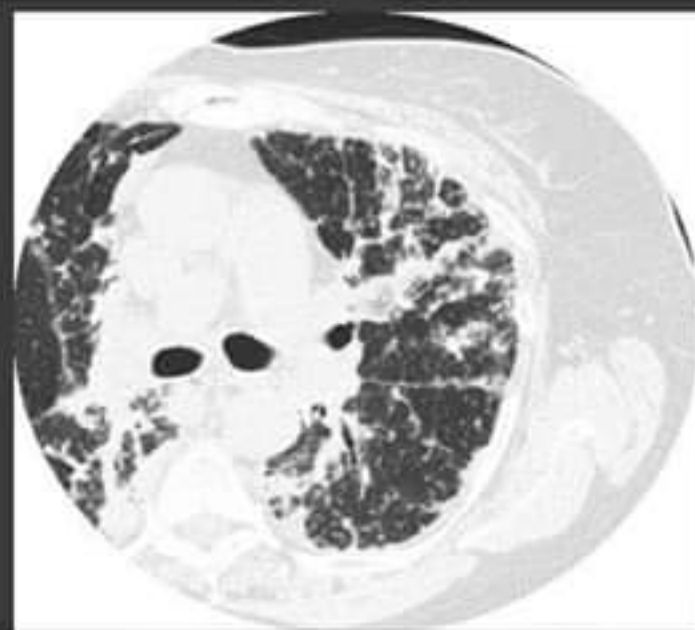


Pulmonary Amyloidosis



Diminished lung volumes with diffuse bilateral reticulo-nodular opacities.



CT images reveal diffuse septal thickening with air-space opacities in both lungs. Subtle nodule formation is seen in all five lobes, but no honeycombing.

Pulmonary Amyloidosis

RADIOLOGY PEARLS

Lung involvement may be
any of three forms:
tracheobronchial, nodular,
or diffuse parenchymal.

Pulmonary Amyloidosis

RADIOLOGY PEARLS

Differential Diagnosis for the nodular type includes metastatic disease, granulomatous disease, rheumatoid, sarcoidosis, and mucoid impaction.

Pulmonary Amyloidosis

RADIOLOGY PEARLS

Differential Diagnosis for the diffuse parenchymal type includes idiopathic interstitial fibrosis, miliary tuberculosis, hypersensitivity pneumonitis, pneumoconiosis (especially asbestosis), rheumatoid lung, pulmonary histiocytosis X, and scleroderma.

Pulmonary Amyloidosis

RADIOLOGY PEARLS

Differential Diagnosis for the tracheobronchial type would include granulomatous disease, broncholith, or bronchogenic carcinoma.