

Medical Terminology



Basic Eye and Ear Terms

Ocul/o, ophthalm/o or opt/o: Pertaining to the eye

Optometrist or optician: specialist in providing corrective lenses to improve vision

Ophthalmologist: Medical doctor who specializes in diagnosis and treatment of eye disorders

Otolaryngology: branch of medicine that focuses on diagnosis and treatment of diseases of the ears, nose, and throat.

Otolaryngologist: A physician who specializes in the diagnosis and treatment of disorders of the ears nose and throat. Also called an ENT.



Eye Anatomy Terms

Blephar/o: eyelid

Conjunctiv/o: conjunctiva

Choroid/o: choroid

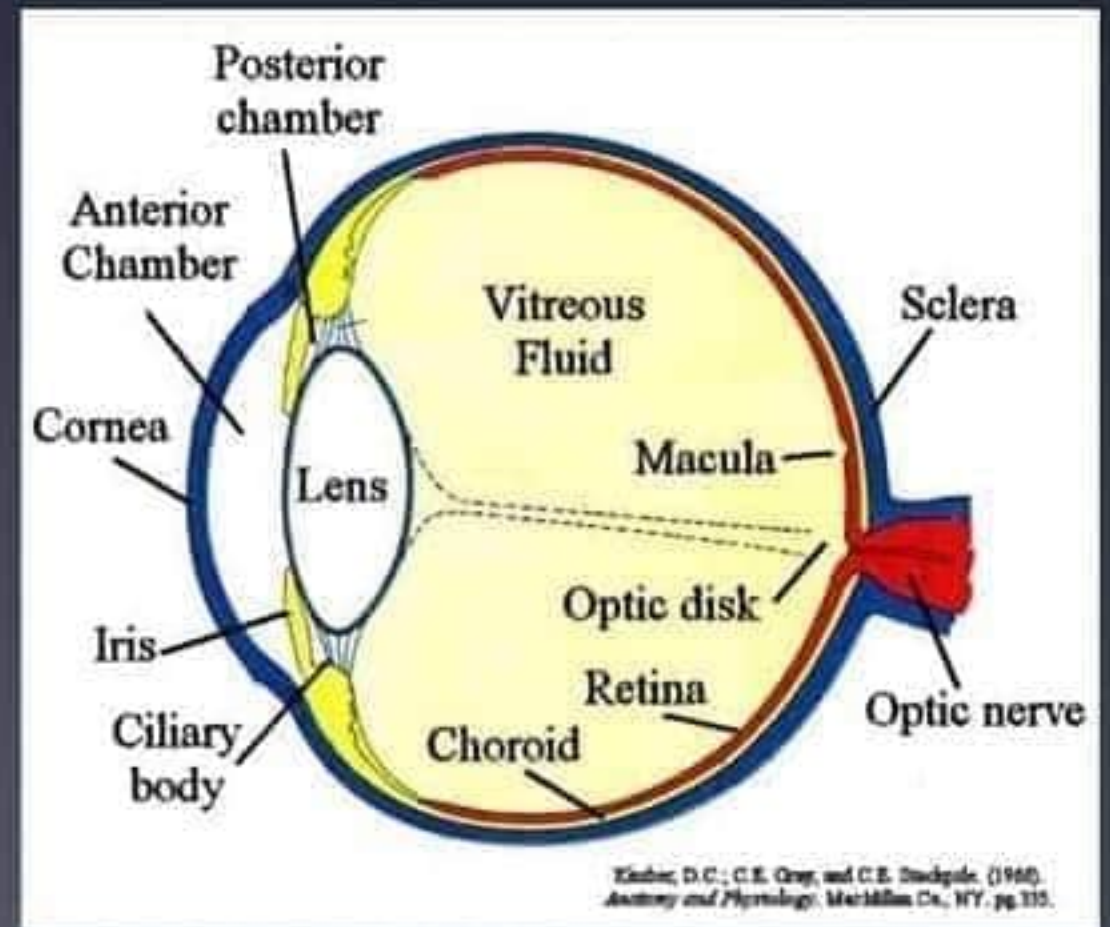
Corne/o or kerat/o: cornea

Cor/o, core/o or pupill/o: pupil

Dacry/o or lacrim/o: tear or tear ducts

Irid/o: iris

Retin/o: retina

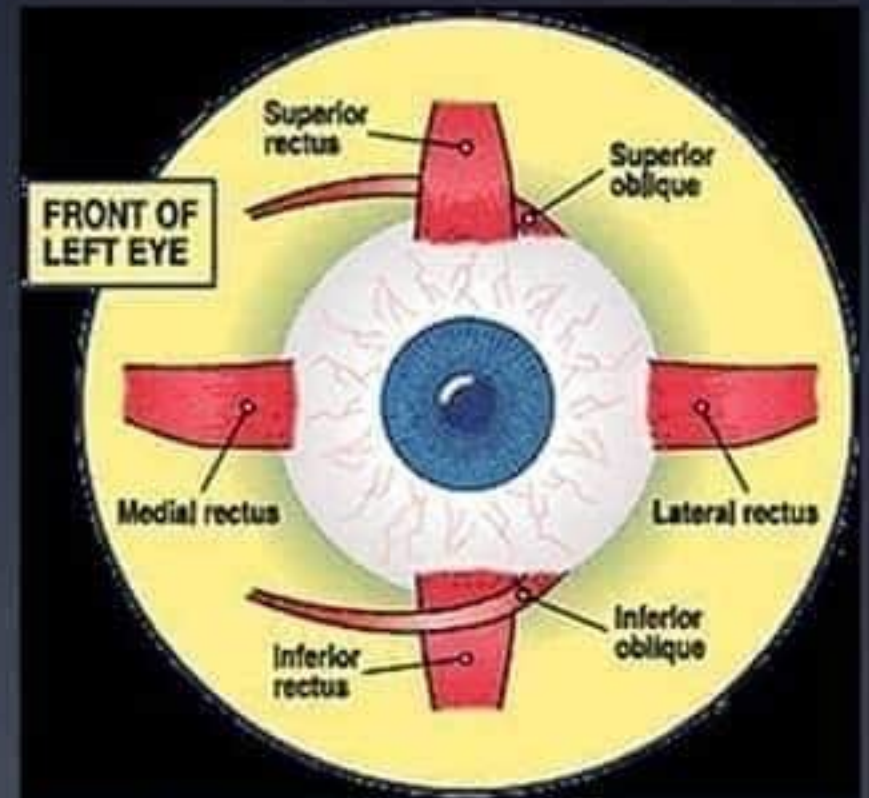


Other Eye Terms

- opia** or -**opsia**: vision
- ptosis**: prolapse or downward displacement
- tropia**: turning

Hyperopia: The lense focuses the visual image beyond the retina, causing difficulty in seeing close objects. Also called farsightedness.

Myopia: The eyeball is too long, so the image falls in front of the retina, causing difficulty in seeing far away objects. Also called nearsightedness.

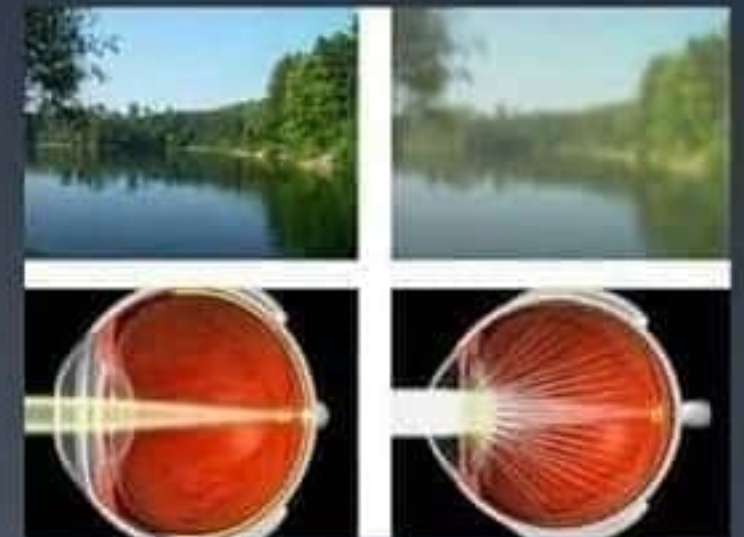


Eye Related Pathology Terms

Astigmatism: Abnormal curvature of the cornea, which causes light rays to focus unevenly over the retina.

Cataract: opacity or cloudiness of the lens. Commonly associated with aging.

Achromatopsia: Colorblindness



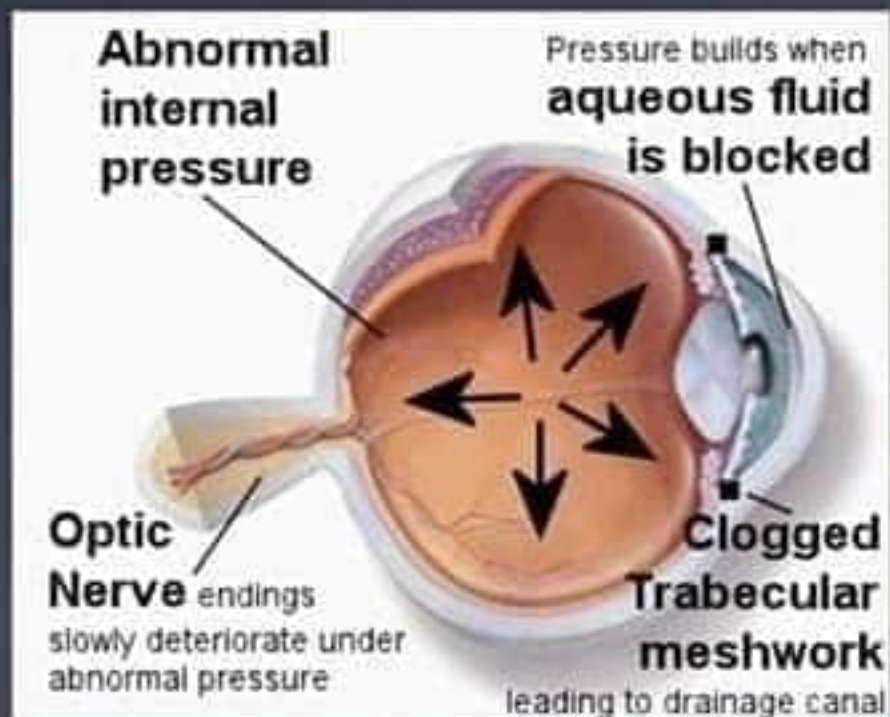
Eye Related Pathology Terms



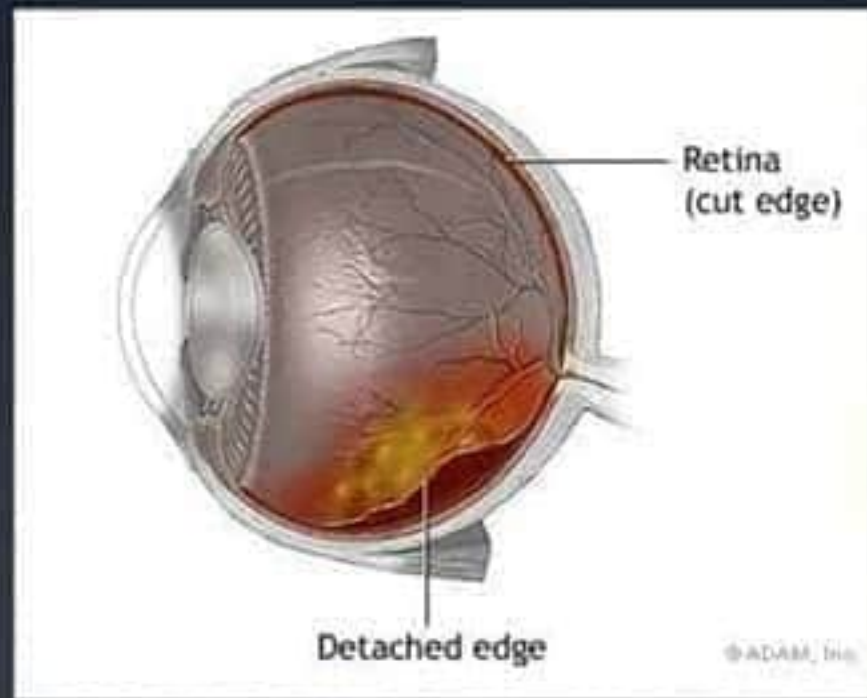
Macular degeneration:

breakdown of the tissue in the macula. Results in central vision loss.

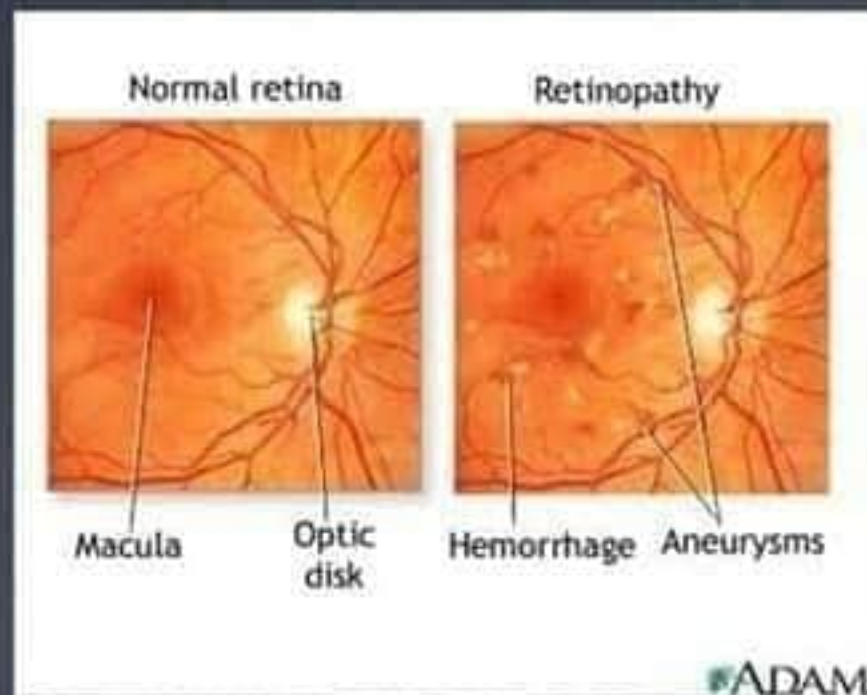
Glaucoma: Increased intraocular pressure caused by the failure of the aqueous humor to drain. Results in atrophy of the optic nerve and, eventually, blindness.



Eye Related Pathology Terms



Retinal detachment:
separation of the retina from the choroid. Disrupts vision and results in blindness if not corrected.



Diabetic retinopathy:
Retinal blood vessel disorder that occurs in people with diabetes. Small hemorrhages, edema, and formation of new vessels leading to scarring and eventual loss of vision



Eye Related Pathology Terms

Strabismus: Abnormal turning or pulling of the eye

Esotropia: strabismus in which one eye turns inward or toward the other eye

Exotropia: strabismus in which one eye turns outward, or away from the other eye.

Both esotropia and exotropia can cause **diplopia**.

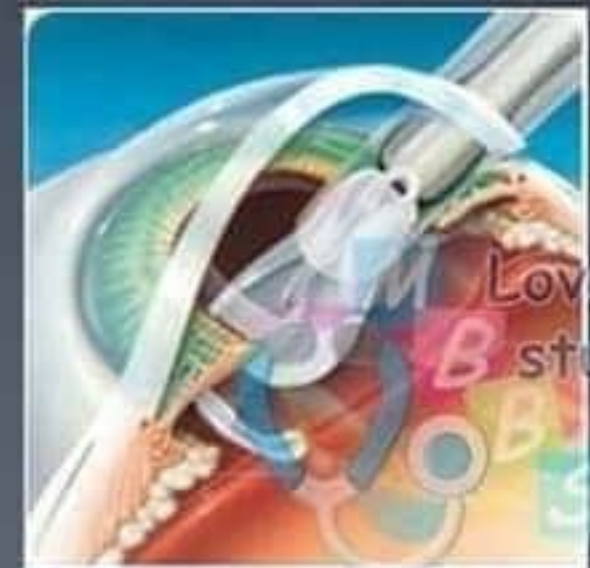
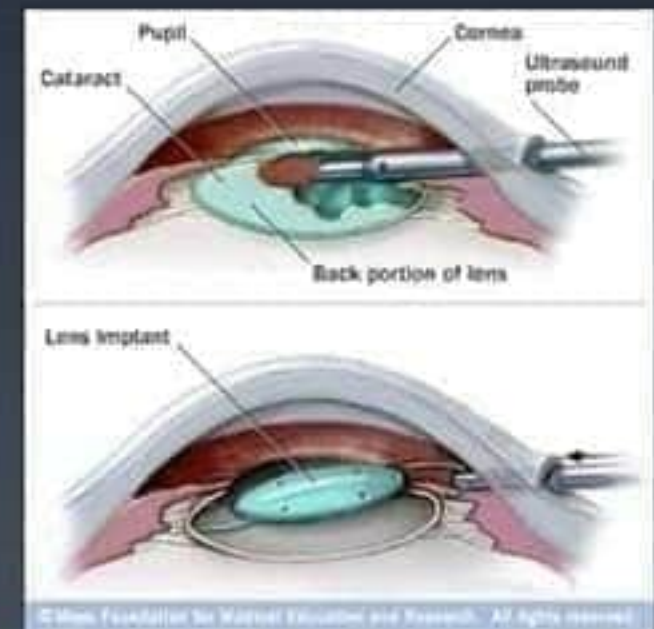
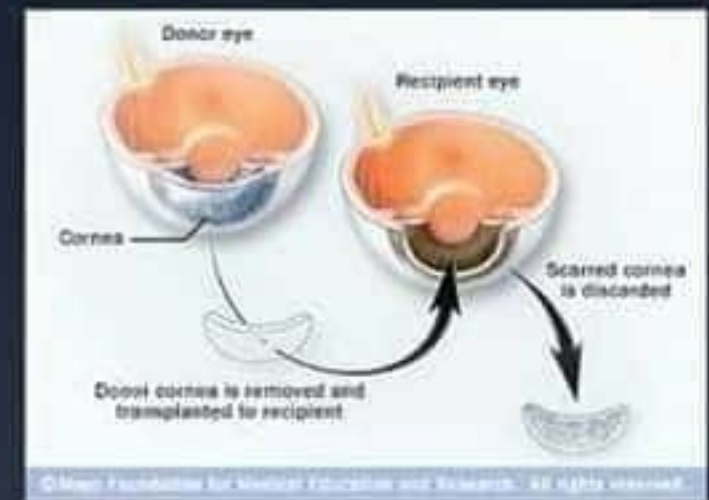


Eye Related Treatment

Corneal transplant: Surgical transplantation of a donor cadaver cornea onto the recipient's eye

Cataract surgery: Excision of cataracts by surgically removing the lens and inserting an artificial intraocular lens

Phacemulsification: Ultrasonic vibrations break the lens into tiny particles which are gently suctioned out of the eye

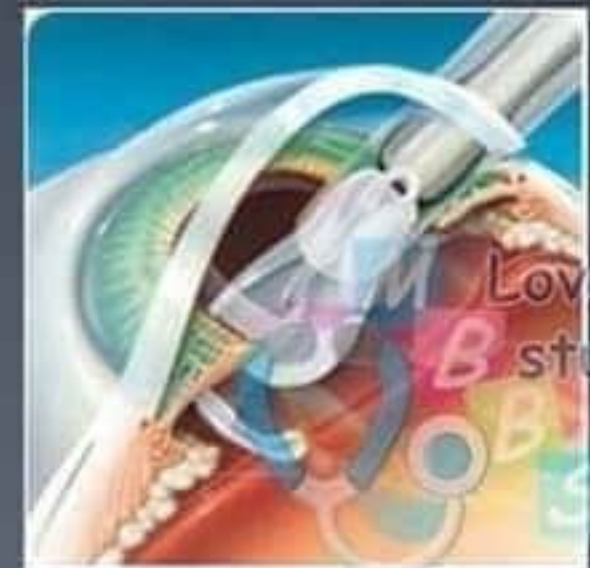
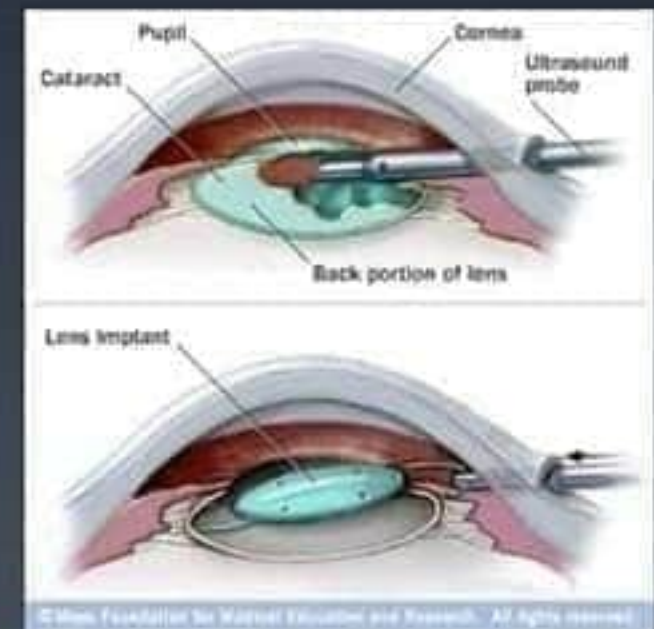
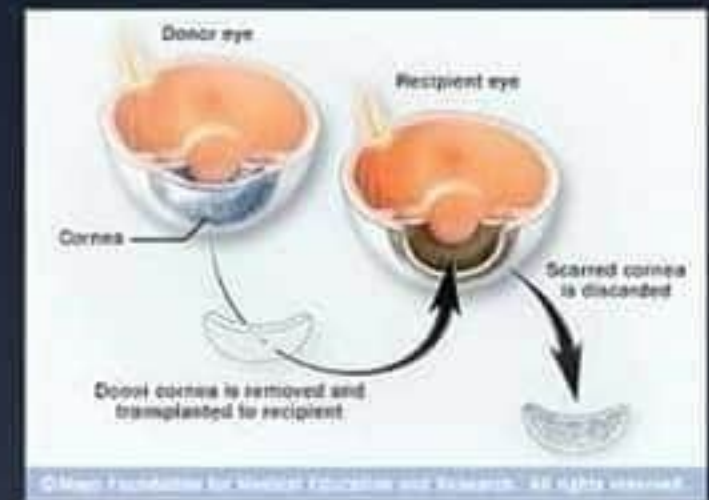


Eye Related Treatment

Corneal transplant: Surgical transplantation of a donor cadaver cornea onto the recipient's eye

Cataract surgery: Excision of cataracts by surgically removing the lens and inserting an artificial intraocular lens

Phacemulsification: Ultrasonic vibrations break the lens into tiny particles which are gently suctioned out of the eye



Love to
study

THANK YOU...!!!