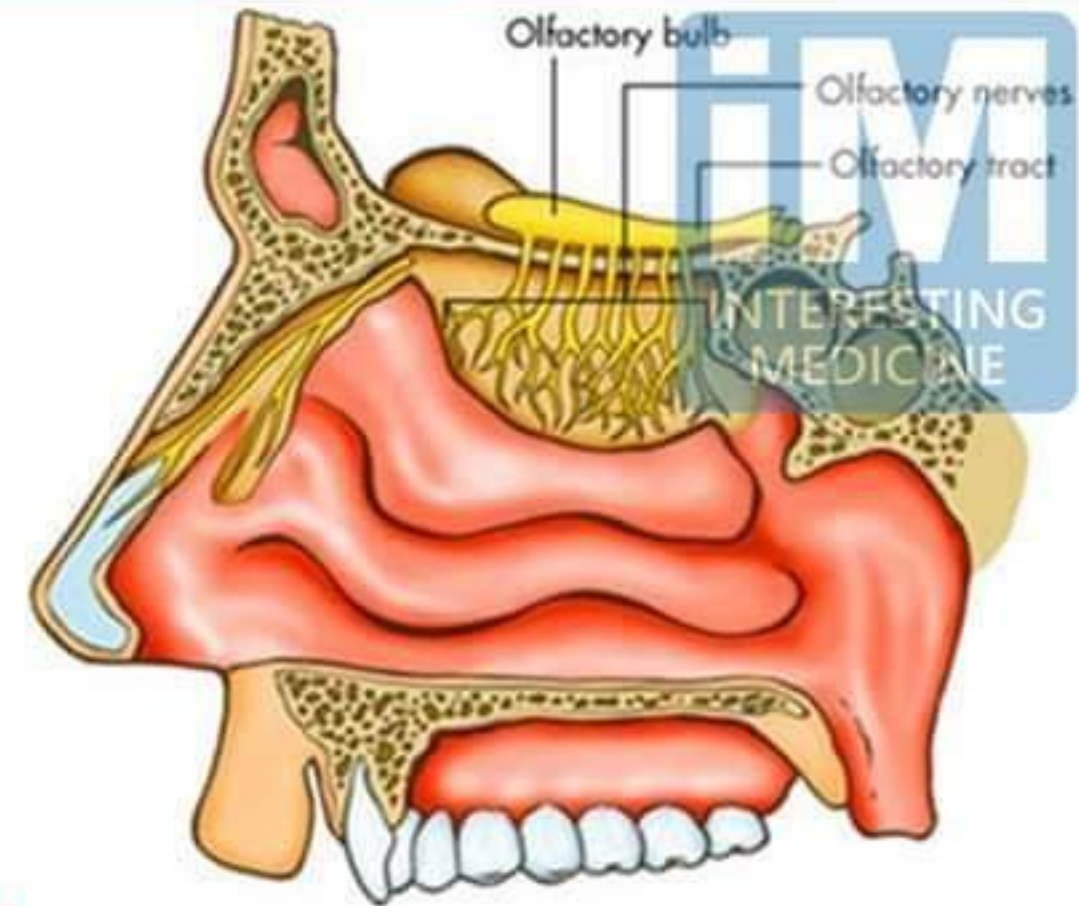


Cranial

Nerves



I. Olfactory Nerve



- **Component: Sensory**

- **Function: Smell**

- **Origin: Olfactory receptor nerve cells**

- **Opening to the Skull: Openings in cribriform plate of ethmoid**



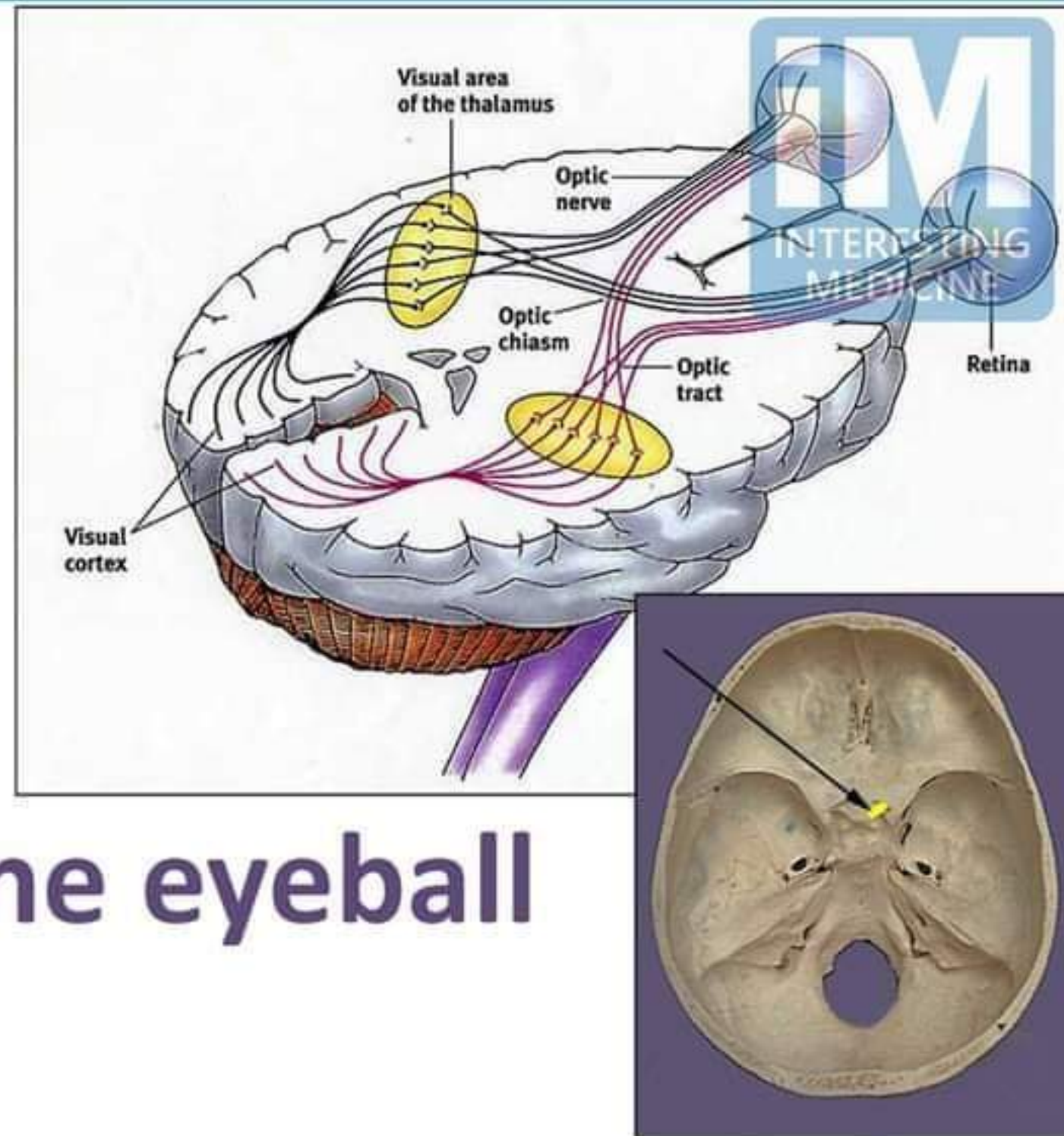
II. Optic Nerve

- **Component:** Sensory

- **Function:** Vision

- **Origin:** Back of the eyeball

- **Opening to the Skull:** Optic Canal



III. Oculomotor Nerve

- **Component: Motor**

- **Function:**

 - Raises upper eyelid

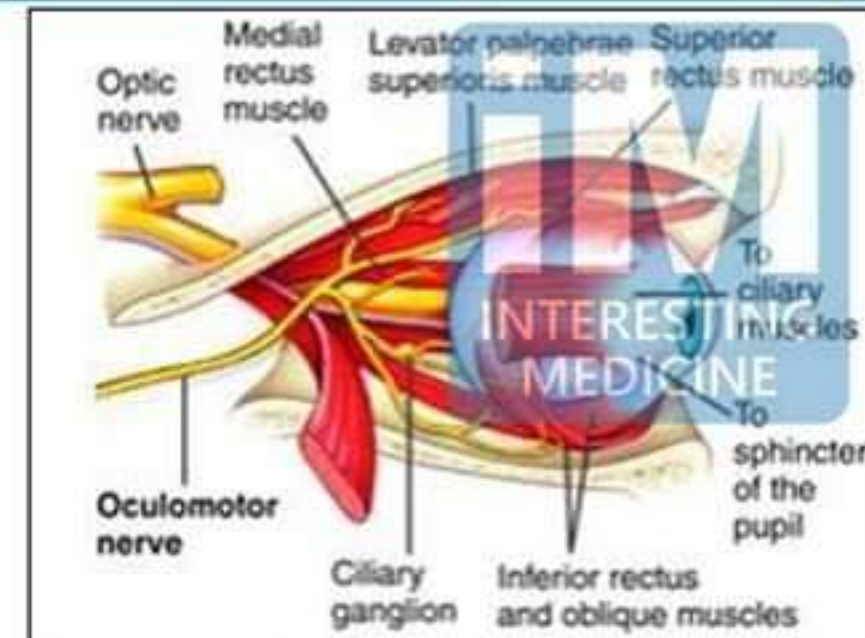
 - Turns eyeball upward, downward and medially

 - Constricts pupil

 - Accommodates the eye

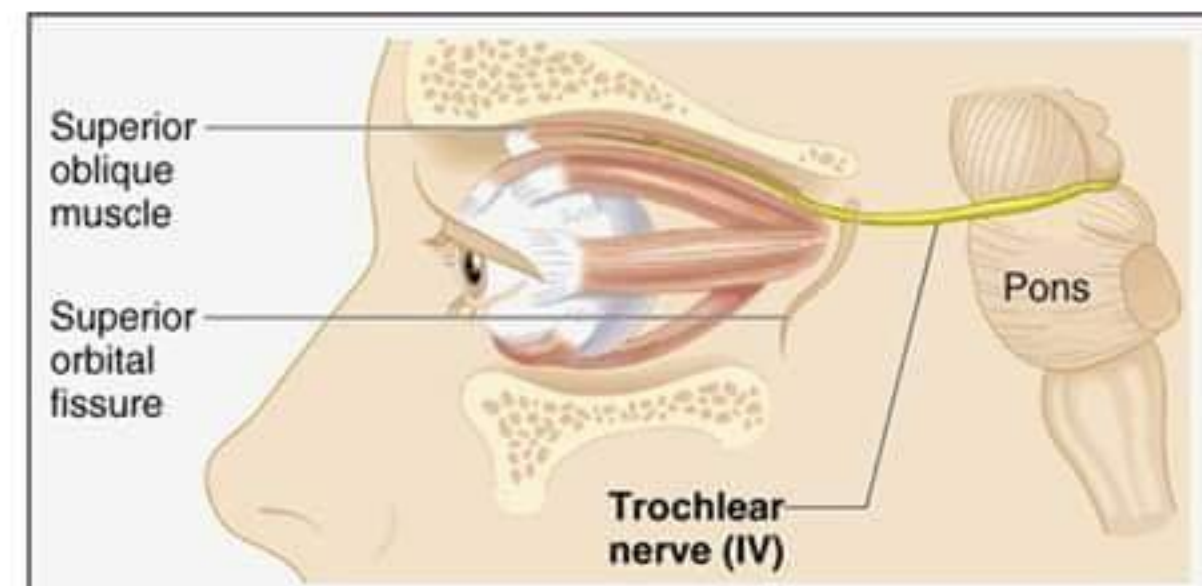
- **Origin: Anterior surface of the midbrain**

- **Opening to the Skull: Superior orbital fissure**

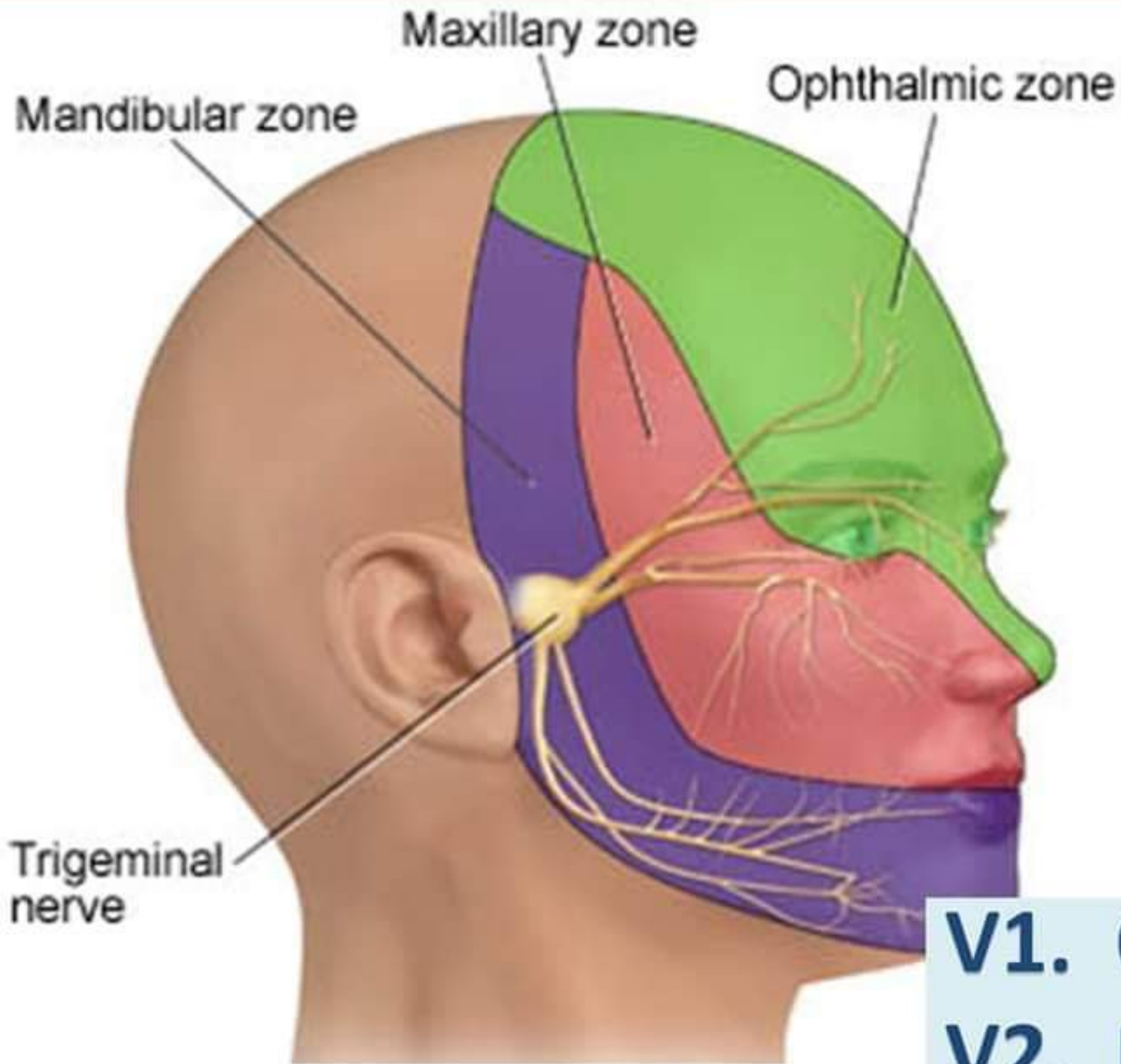


IV. Trochlear Nerve

- **Component: Motor**
- **Function: Assisting in turning eyeball downward and laterally**
- **Origin: Posterior surface of the midbrain**
- **Opening to the Skull: Superior orbital fissure**



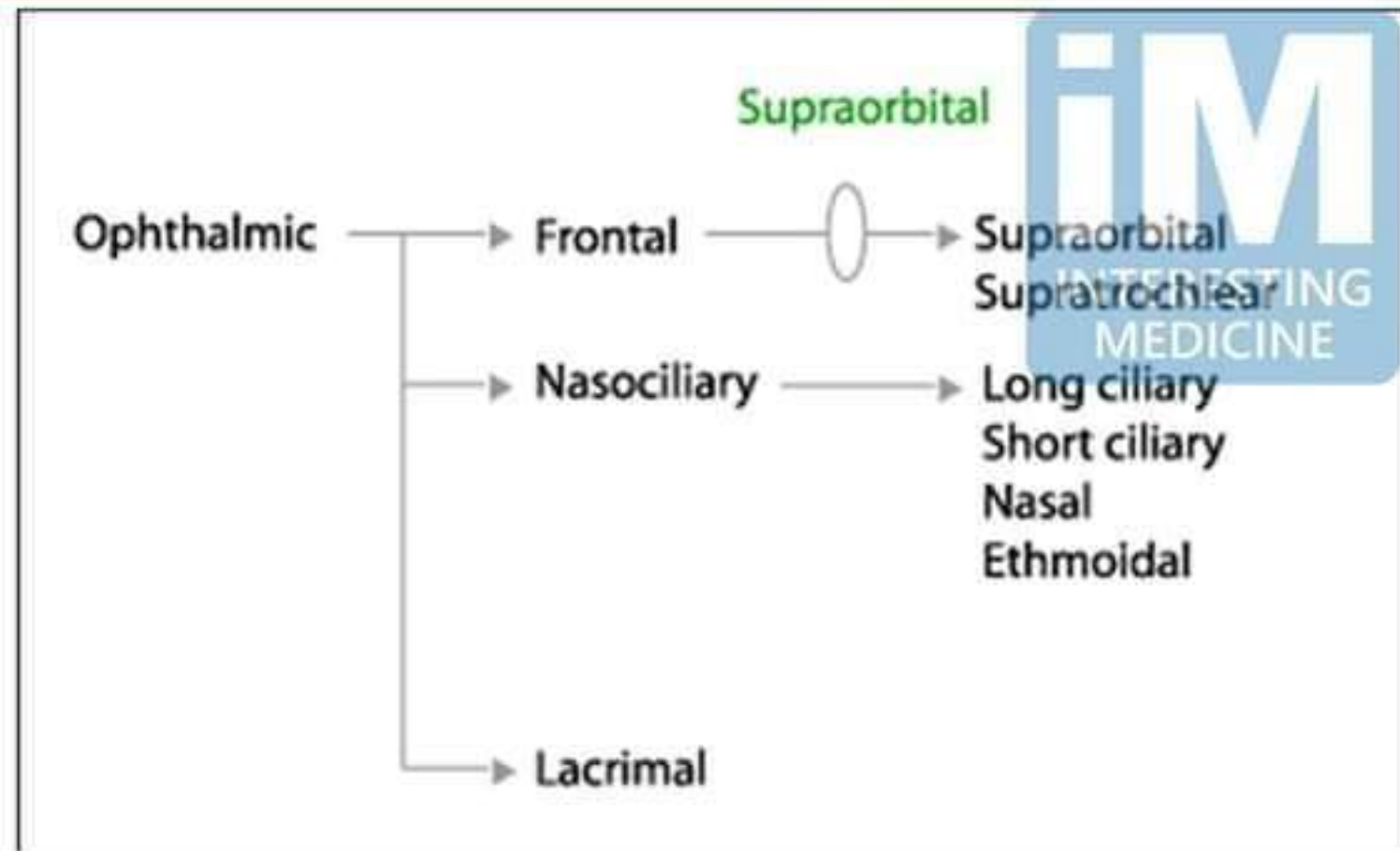
V. Trigeminal Nerve



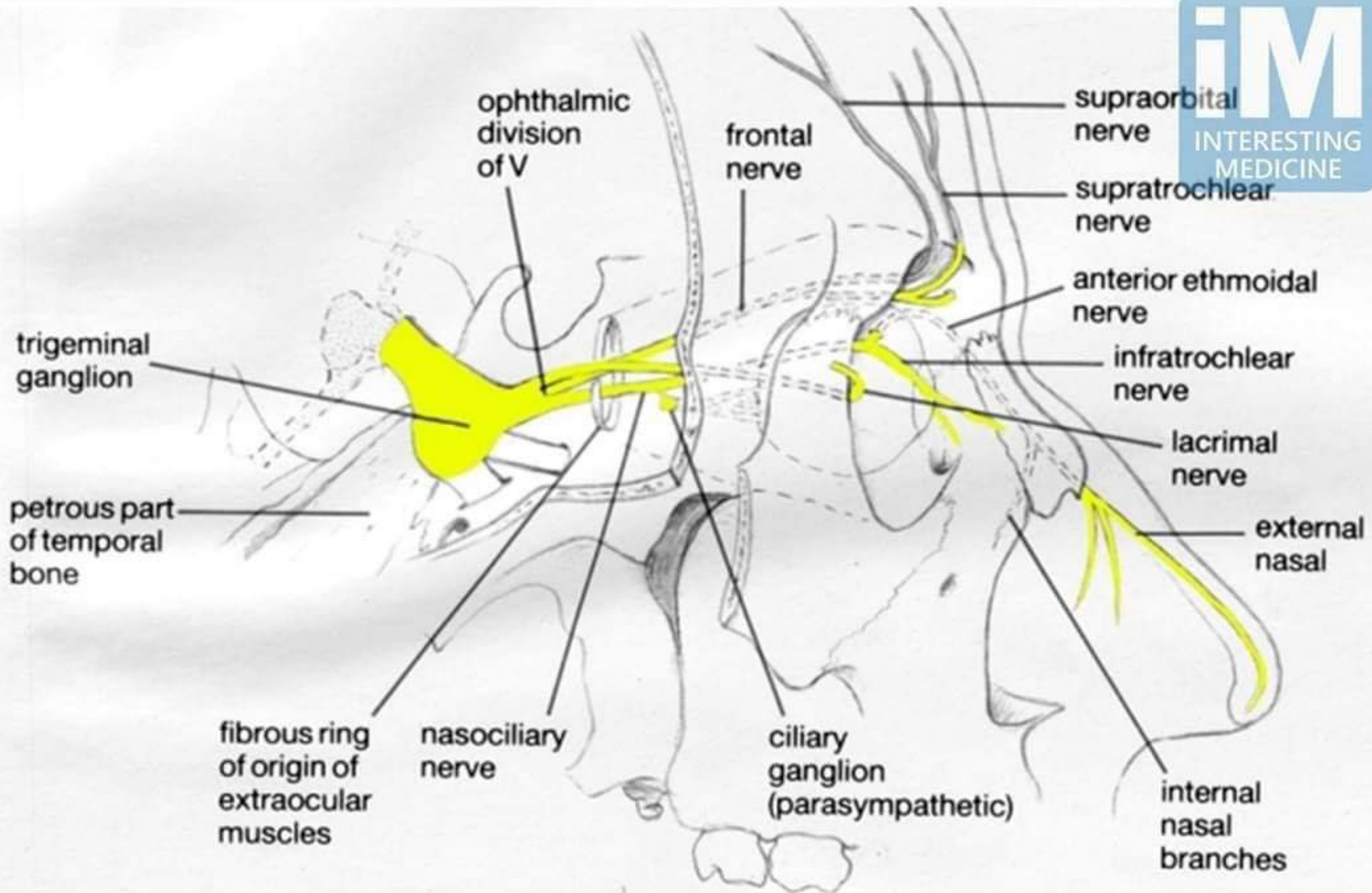
- V1. Ophthalmic Nerve**
- V2. Maxillary Nerve**
- V3. Mandibular Nerve**

V1. Ophthalmic Nerve

- **Component:** Sensory
- **Function:**
 - Cornea
 - Skin of forehead
 - Scalp
 - Eyelids and nose
 - Mucous membranes of paranasal sinuses and nasal cavity
- **Origin:** Anterior aspect of the pons
- **Opening to the Skull:** Superior orbital fissure



V1. Ophthalmic Nerve

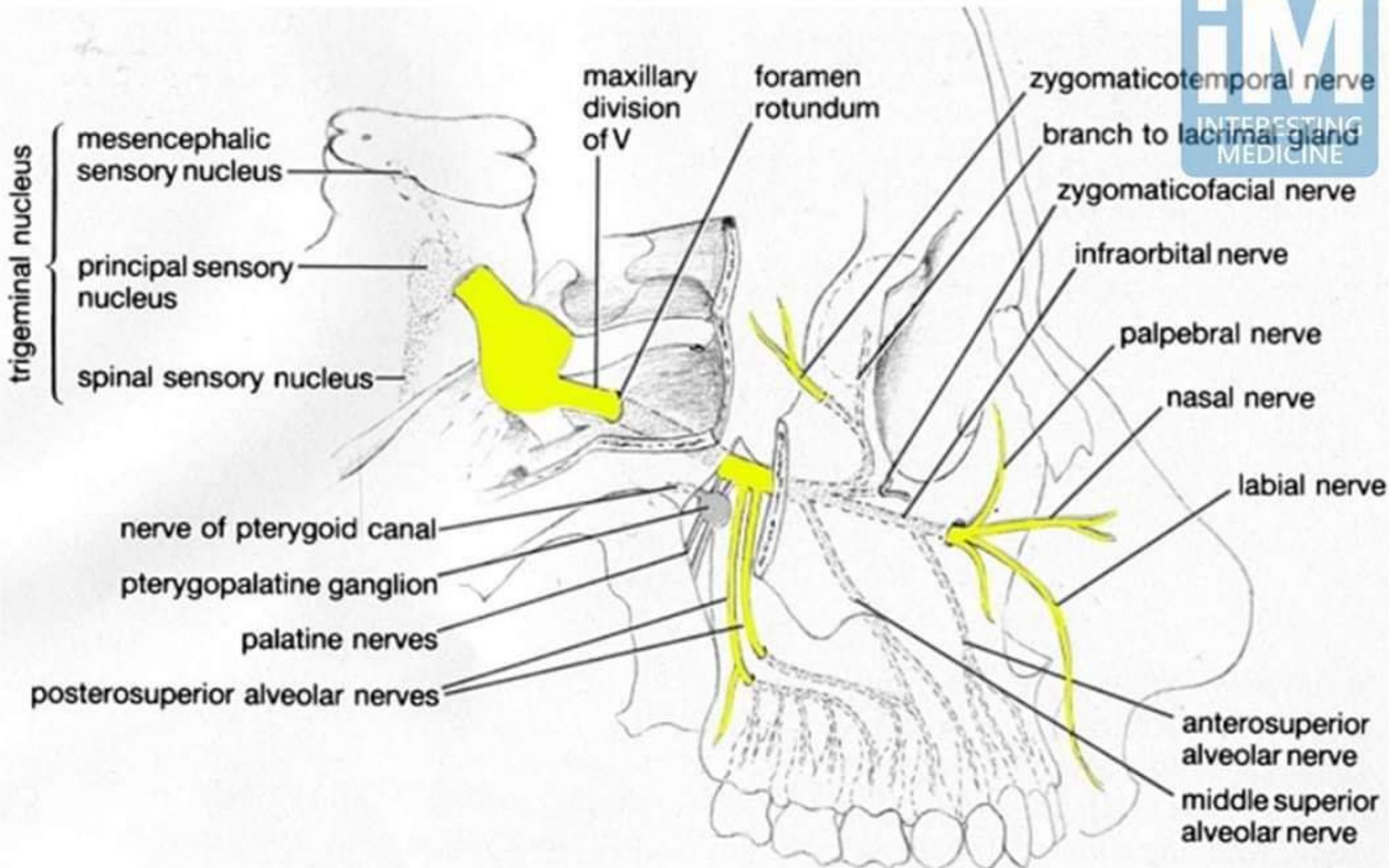


V2. Maxillary Nerve



- **Component:** Sensory
- **Function:**
 - Skin of the face over maxilla
 - Teeth of the upper jaw
 - Mucous membrane of the nose, the maxillary sinus and palate
- **Origin:** Anterior aspect of the pons
- **Opening to the Skull:** Foramen ovale

V2. Maxillary Nerve



V3. Mandibular Nerve



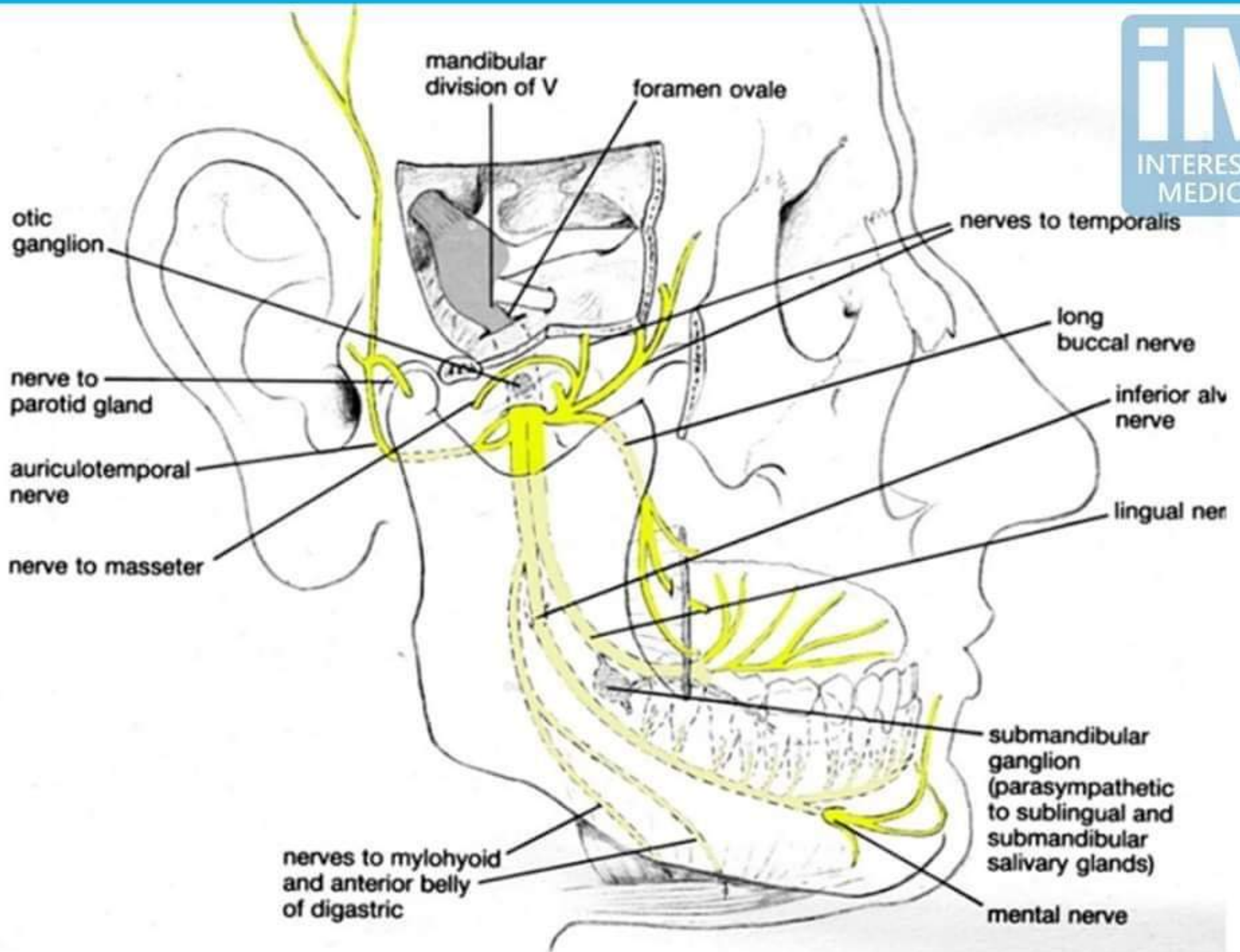
- **Component:** **a. Motor**
- **Function:**
 - **Muscles of mastication**
 - **Mylohyoid**
 - **Anterior belly of digastric**
 - **Tensor veli palatine**
 - **Tensor tympani**
- **Origin:** **Anterior aspect of the pons**
- **Opening to the Skull:** **Foramen Rotundum**

V3. Mandibular Nerve



- **Component:** **b.** Sensory
- **Function:**
 - Skin of cheek
 - Skin over mandible and side of head
 - Teeth of lower jaw and TMJ
 - Mucous membrane of mouth and anterior part of tongue
- **Origin:** Anterior aspect of the pons
- **Opening to the Skull:** Foramen Rotundum

V3. Mandibular Nerve



VI. Abducent Nerve

- **Component:** Motor
- **Function:** Lateral rectus muscle turns eyeball laterally
- **Origin:** Anterior Surface of hindbrain between pons and medulla
- **Opening to the Skull:** Superior orbital fissure

