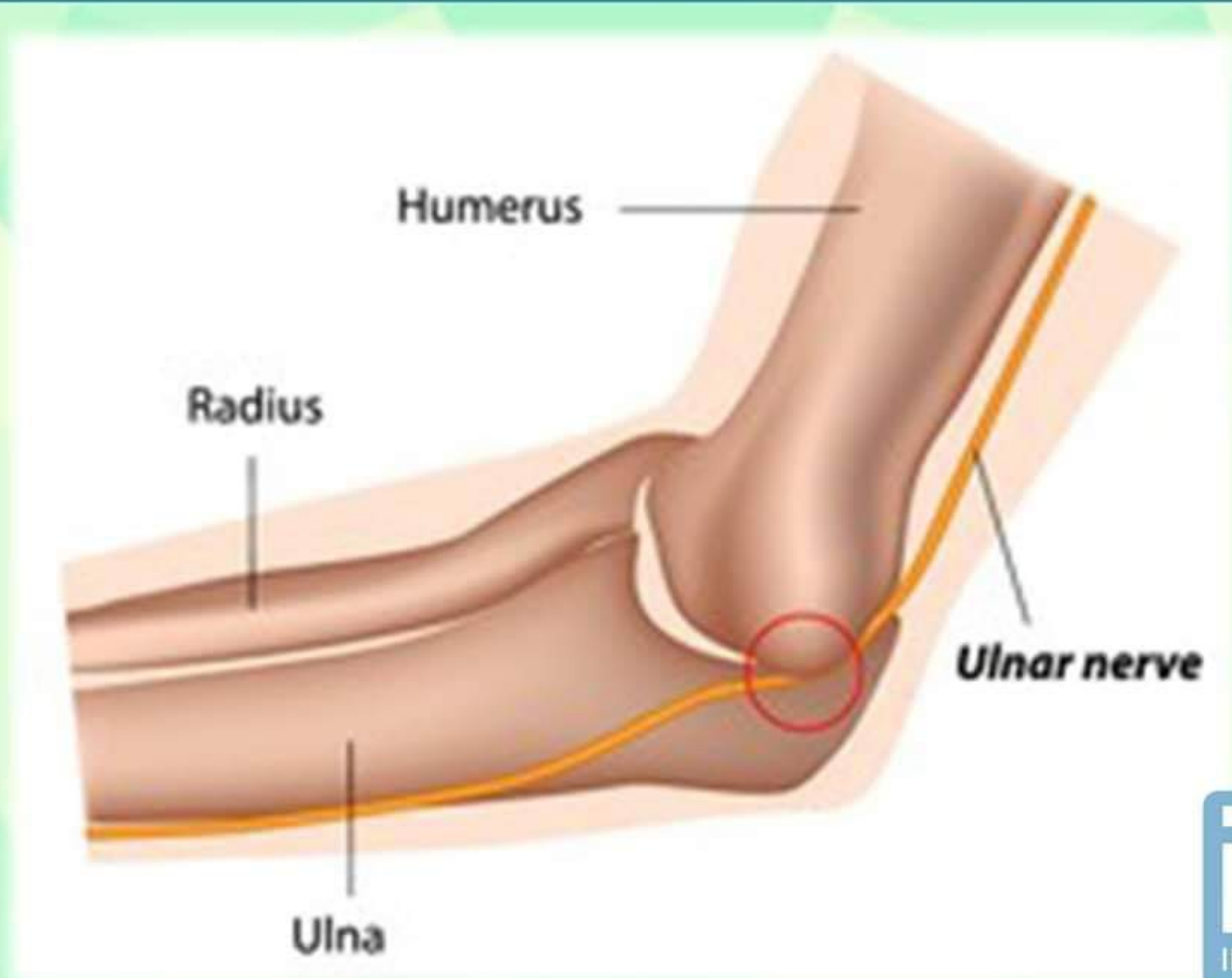


# Anatomy Of Ulnar Nerve



# Introduction

Ulnar nerve is one of the major terminal Branches of Brachial Plexus. It is the continuation of medial cord of brachial plexus which arises from the anterior Division of the lower Trunk.

The fibers of ulnar nerve arise from the eighth cervical and first thoracic nerve, so the root value of ulnar nerve is C8 and T1. These (C8,T1) coordinate to form the lower trunk of brachial plexus.



# Brachial Plexus

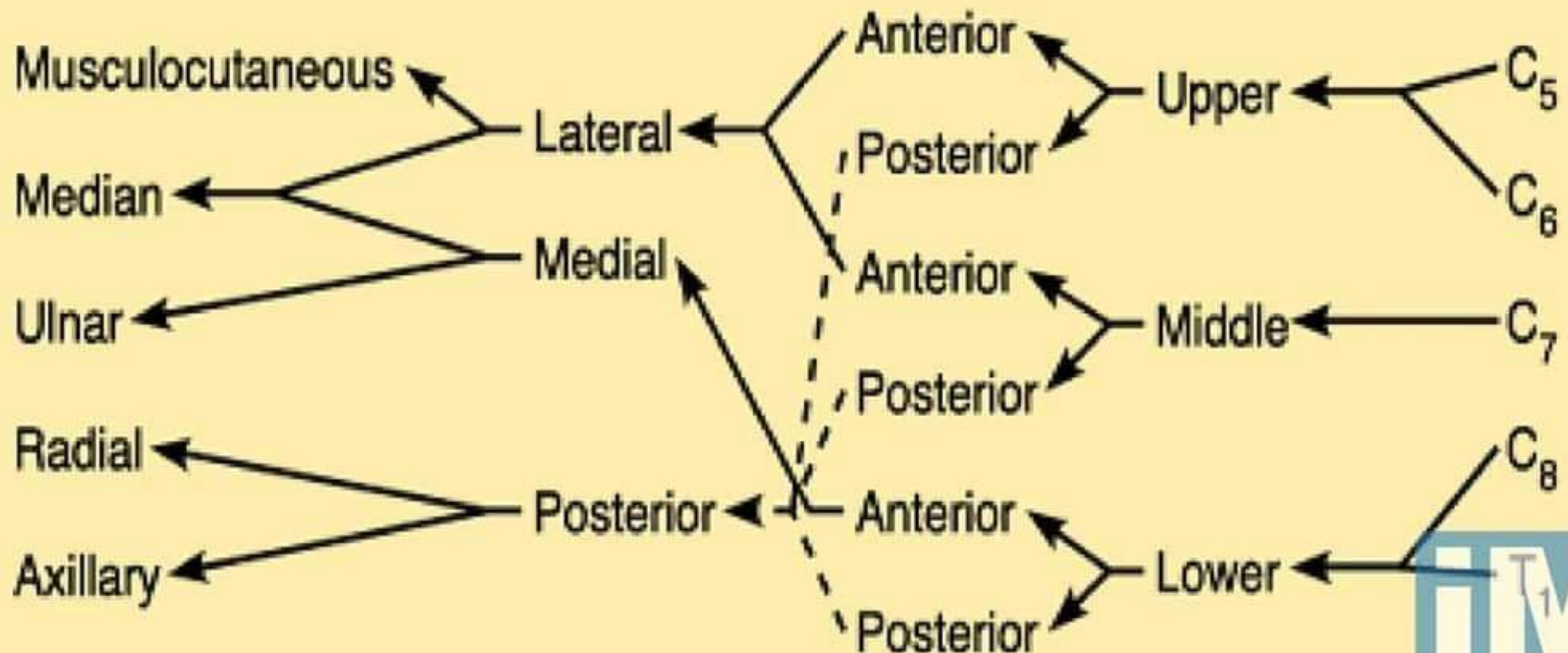
**Major terminal  
branches  
(peripheral nerves)**

**Cords**

**Divisions**

**Trunks**

**Roots  
(ventral  
rami)**





# Continuation of Ulnar Nerve

## Course From Cord to Axilla.

The Ulnar nerve runs between the Axillary artery and vein in the axilla.

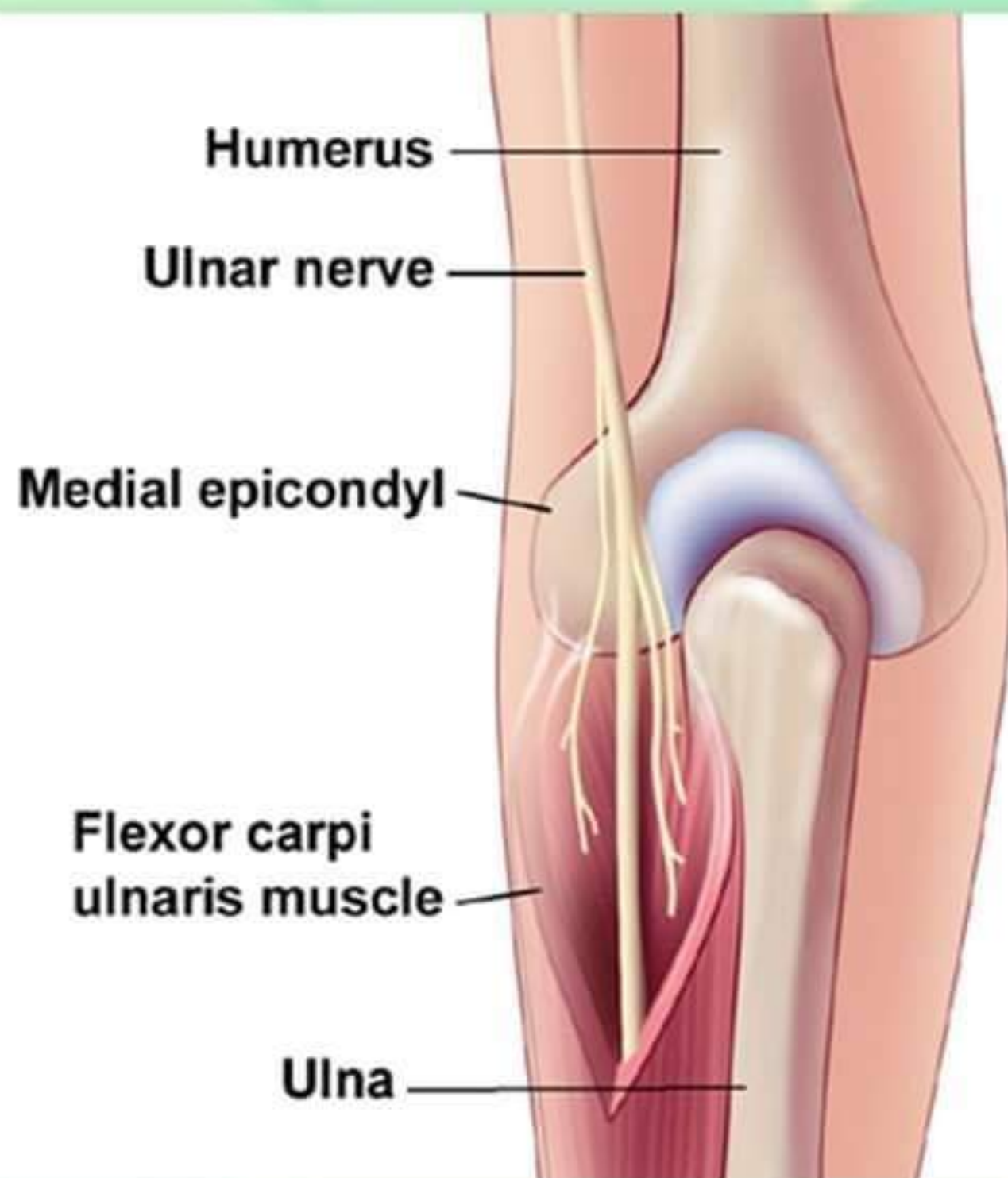
## Course from Axilla to Arm

From the axilla it enters in the arm and stays between the brachial artery and vein.



# Course from Arm to Elbow

The nerve runs inferior and posterior medial aspect of humerus bone till it enters the cubital tunnel. In the arm throughout the course the nerve runs superficially and innervates no any muscle.



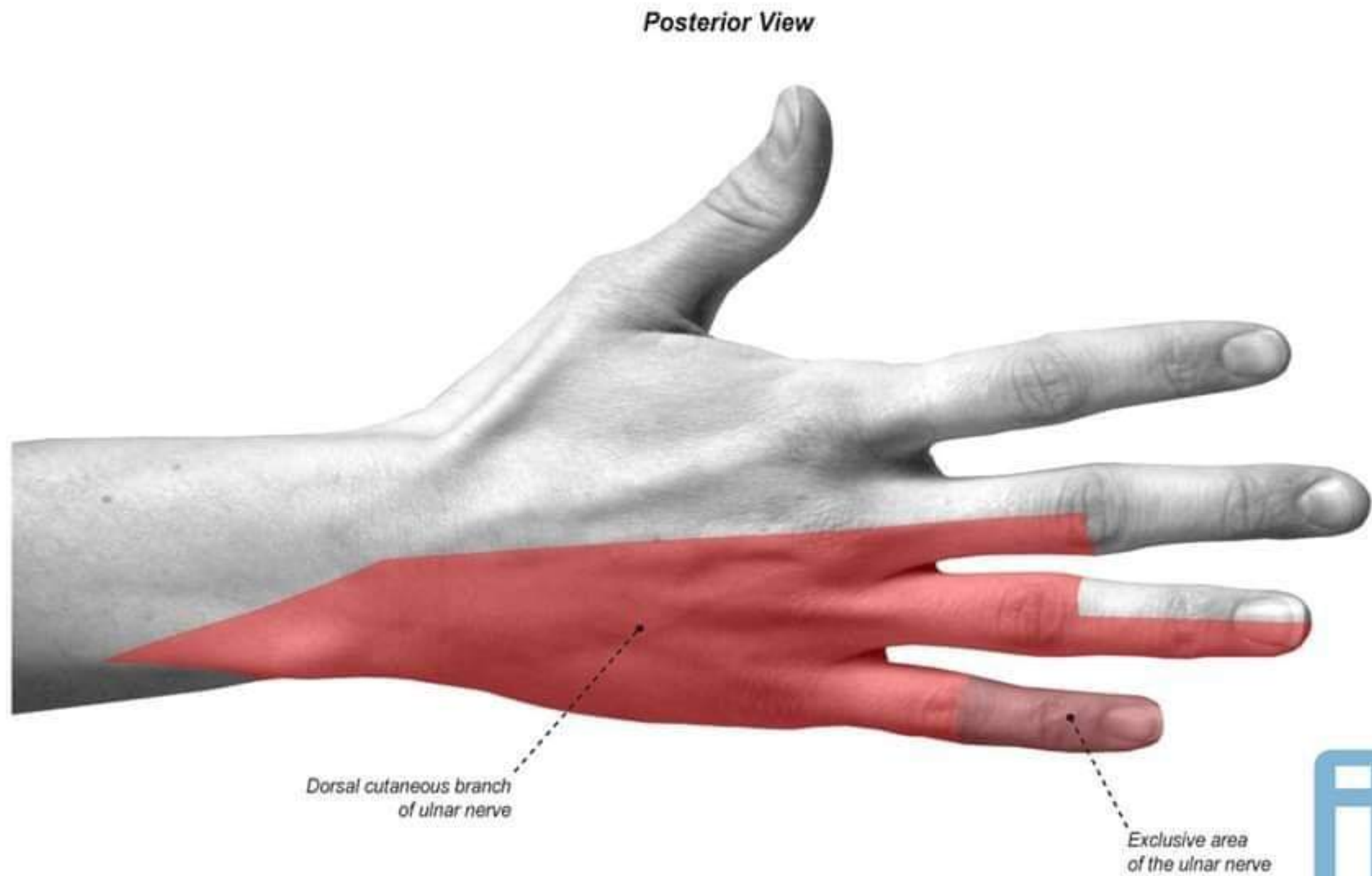


# Course from Elbow to Forearm

At the elbow the ulnar nerve lies in a groove (Retrocondylar groove) which is formed by medial epicondyle humerus and olecranon process of ulna, referred as "funny bone". The ulnar nerve is trapped between the bone and the overlying skin at this point.

It enters the forearm through the aponeurotic arcade (Cubital Tunnel).

# Dorsal cutaneous branch





# Palmar cutaneous branch



# Ulnar Innervated Muscles

## Forearm

Flexor Carpi Ulnaris (C7, C8, T1)

Flexor Digitorum Profundus III & IV (C7, C8)

## Thenar

Hypothenar Muscles (C8, T1)

Flexor Pollicis Brevis (C8, T1)

Adductor Pollicis (C8, T1)

## Fingers

Palmer Interosseous (C8, T1)

Dorsal Interosseous (C8, T1)

III & IV Lumbricals (C8, T1)

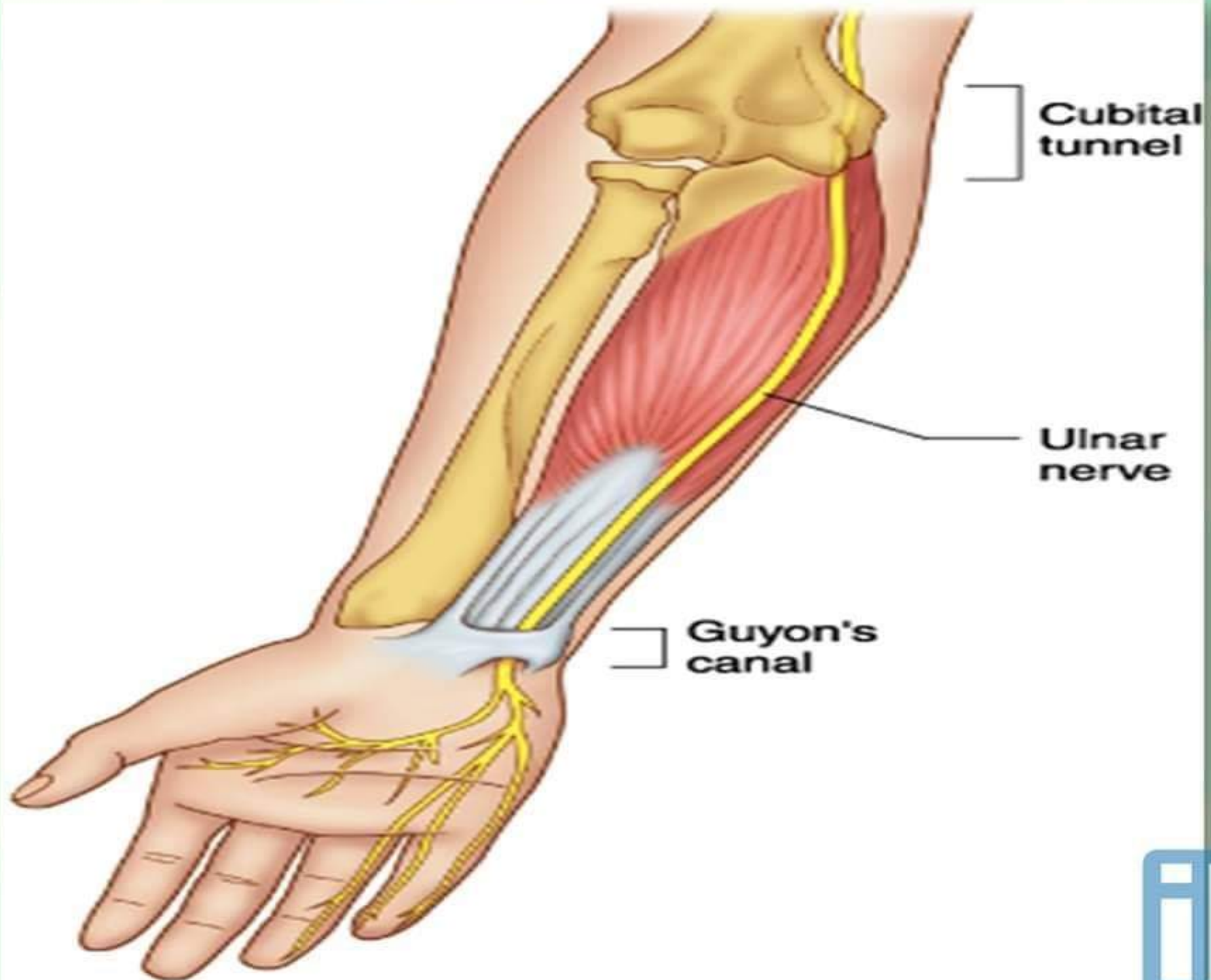
## Digiti Minimi:

Abductor Digiti Minimi (Quinti) (C8, T1)

Opponens Dgiti Minimi (C8-T1)

Flexor Digiti Minimi. : ( C8-T1)





# Ulnar Nerve Distribution

