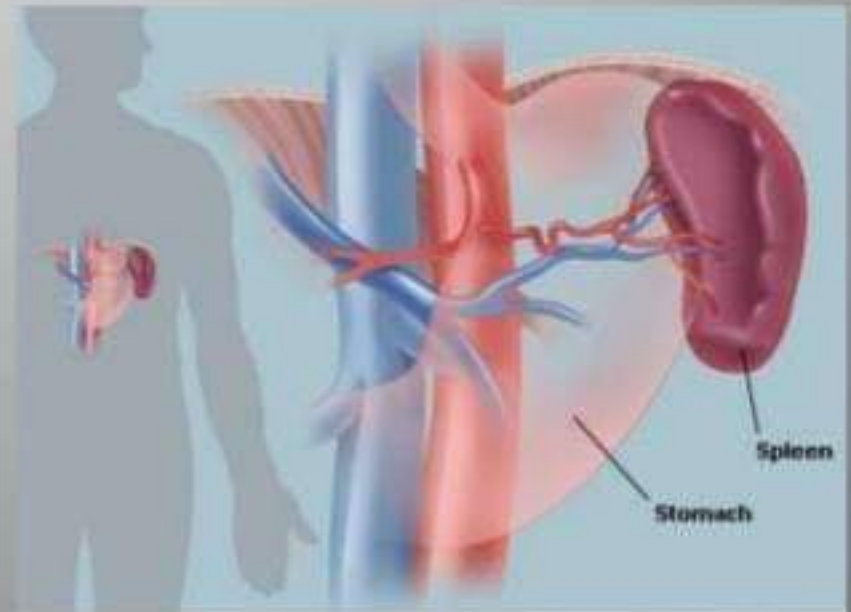


# The Spleen - Functions

- Produce lymphocytes that aid our immune system (produce antibodies)
- Remove old & damaged red blood cells
- Acts as a reservoir of blood in times of shock or hemorrhage
- Preserves iron during filtration, important for synthesizing hemoglobin



Vein

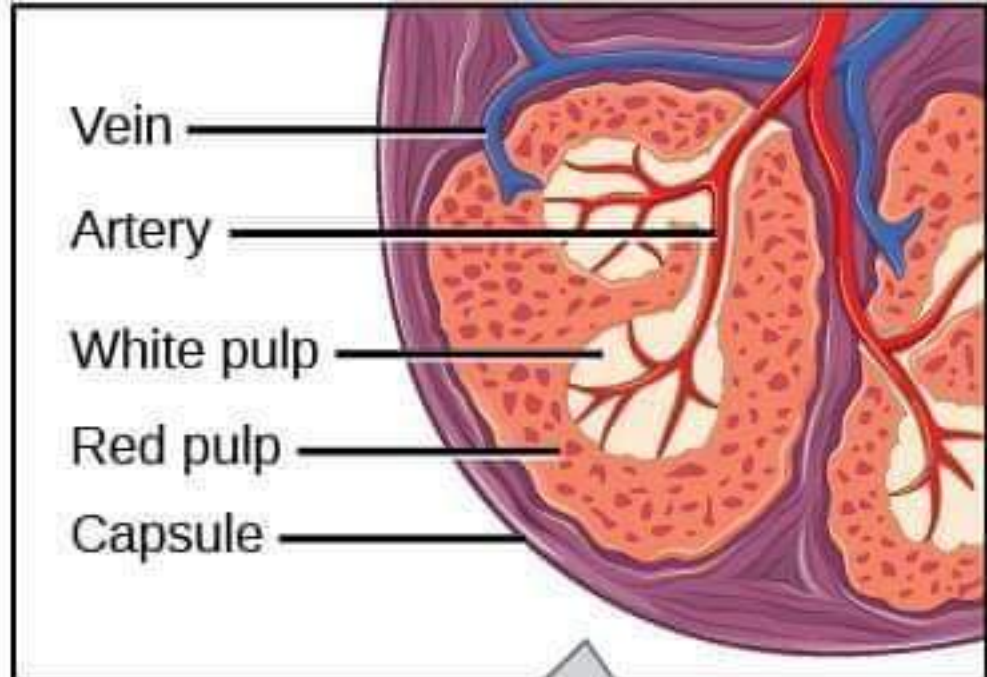
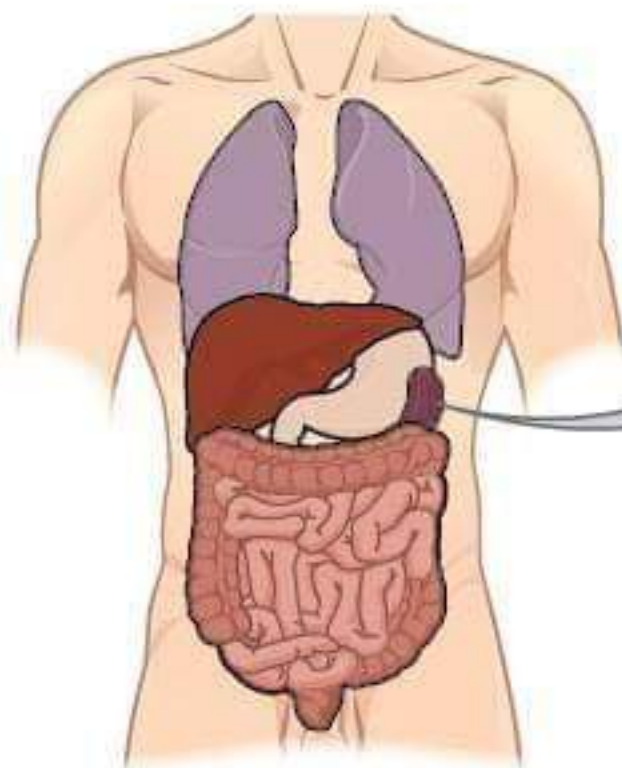
Artery

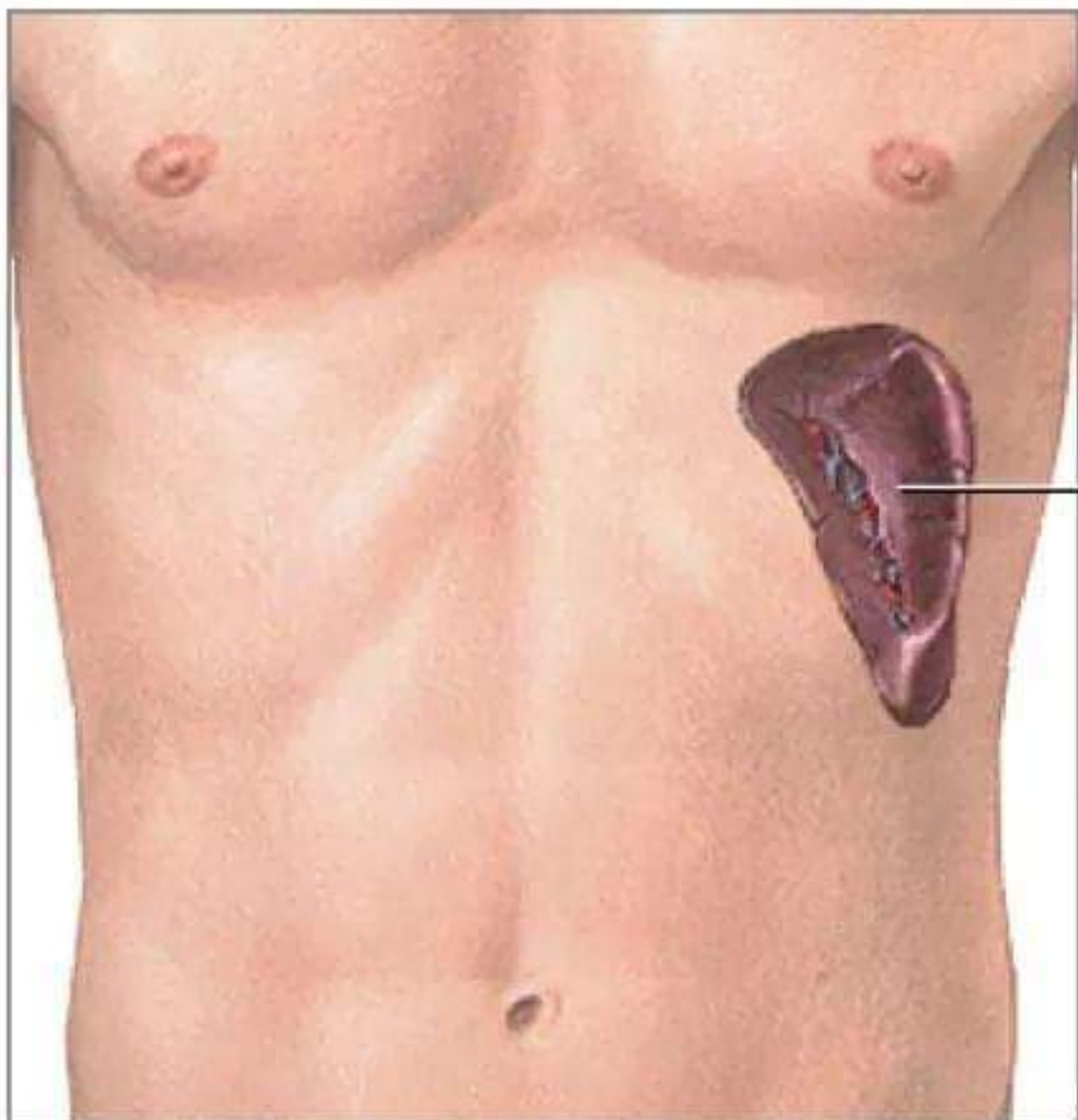
White pulp

Red pulp

Capsule

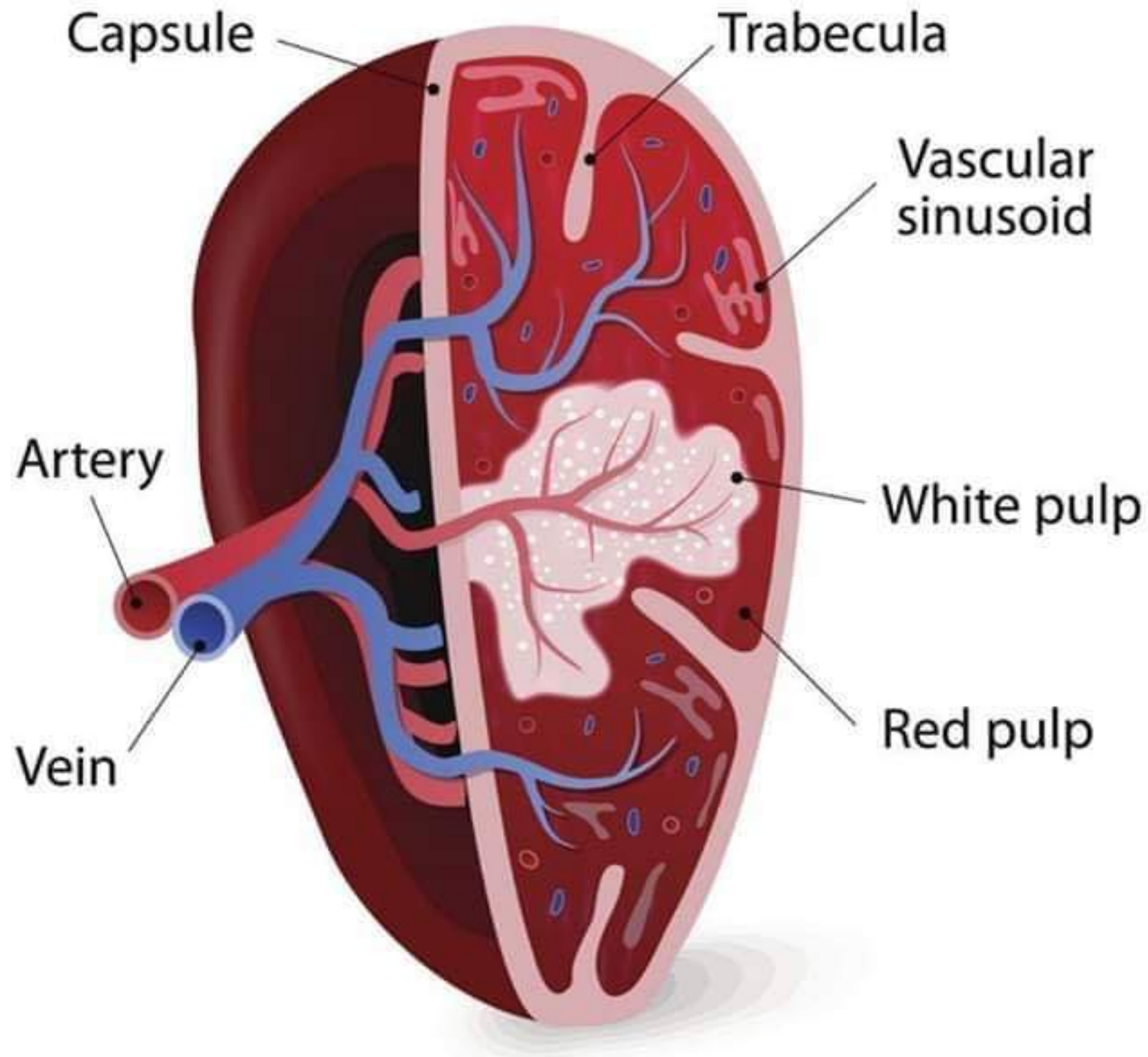
Spleen





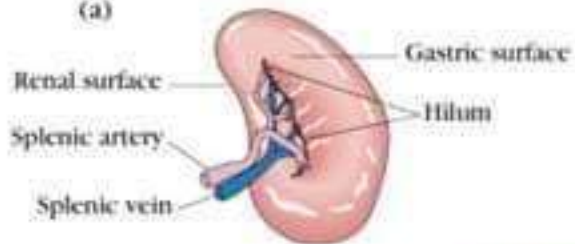
Spleen

# SPLEEN ANATOMY





(a)



(b)

